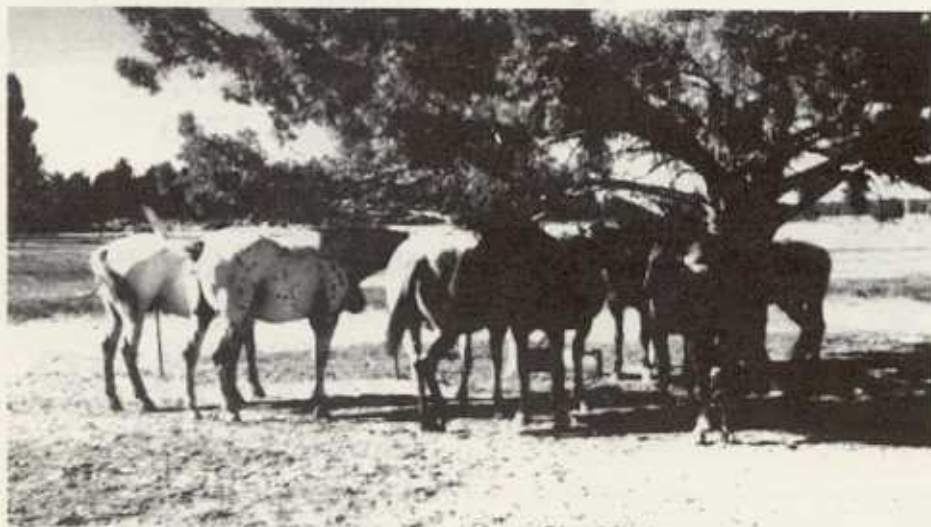


Some programs have outcrossed themselves practically out of the Appaloosa picture, and it is for these, as well as the new breeders, that we provide a reservoir of Appaloosa traits in strength, that will not greatly change the type of horse a potential customer may be breeding, be they race horse, pleasure horse or refined almost to the Arab level. We will not sell a horse that does not fit the buyer's desired situation.

No discussion of a breeding program is complete without mention of the mare bands. Quality to match the stallions is the beginning standards, since a good horse does better with good mares. Our mare bands contain grand-daughters of Blue Bear, by Bear Step, also old line refined Appaloosas descending from Idaho panhandle families, direct descendants from the last of the Nez Perce herd at Nespelem, se-

of Appaloosas foaled in the early sixties, we see horses with enough substance and APPALOOSA conformation to compare favorably and in many ways surpass the non-colored "winners" of today. When stamina and tractability are considered, along with their ability to reproduce these traits, there is just no comparison with the poorer reproductive ability of today's product.

When a scientist wishes to prove a theory, or point, he first begins by removing the variables one by one, testing and retesting. The same approach holds true in breeding programs that are successful. The horse breeding process is somewhat different however, because you cannot physically remove dilutants from a living gene pool. It is a very slow and sometimes painful method of introducing only agents known to be pure (or as pure as possible) to the mix.



Kuetan Ranch Mare Band, 1980

lected Apache mares having leopard grandparents, blended with descendants of Artesian Toby's Chief and (those of) Polkadott Bear.

With the continuous increase in hybridizing of the breed in the past twenty years, it is becoming increasingly difficult to find a family or strain that can reproduce itself in kind with any degree of predictability.

In looking at some old photos

In the case of horses, the pedigrees of many great sires show frequent reconcentration and reblending. This is now a most necessary practice, since the doubled and redoubled outcrossing of recent decades has removed what has now become the recessive variable — Appaloosa color, and the character, itself. The "solid-color" issue has arisen directly from these practices, and from no other cause.



Red Thunder and Eagle Toby playing in the snow



Bert Russell's Mare Band, 1965