

blanket, where a blanket can average (in an outcross) to much less, such as a snow spot pattern, or in some cases no color at all. The more color and color potential you have to begin with, the more you are apt to have in the product; and that, many breeders' opinions to the contrary, is a matter of mathematical probabilities. It is often the difference between success and complete failure.

When these probabilities are historically identified, you can strongly rely on success, because the odds are increased for the given possibility you are seeking to express in a given mating.

The Toby line blends well with Patchy products, those of Red Eagle and Morgan's Leopard. Those descendants of Apache 730, even though quite plain in some instances, having leopard forbears in the female line, also produce excellent colored quality brood stock when mated with Toby studs.

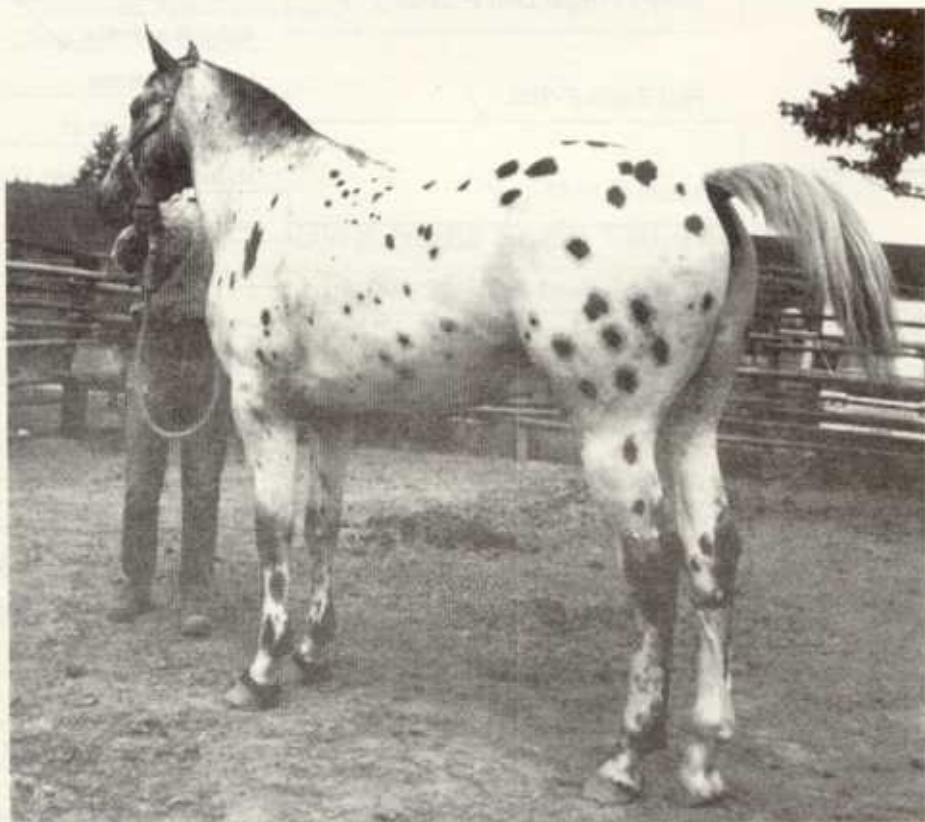
Most Appaloosa horsemen know you can find exceptional horses in most first families in the Appaloosa world today, be they Toby, Patchy, Apache, Comanche, Sundance, or any other. You can also find relatives of these animals that are "dogs" in any of the aforementioned families. In rare instances the genes may not fall right, but it is generally the fault of the breeder and not the horses if such or similar matings are repeated.

If you study the pedigrees of your own horses, you may be surprised at the influence of the genes of old Knobby. It is doubtful if any other Appaloosa antedating the stud book, has done more to lay the foundation of many present day herds.

Many horses were sold in his time into the Central California area. Since no registry or name records were kept, 20 years before the first stud book, the specific relation to many famous horses has been lost but family similarities are clearly apparent to knowing horsemen.



Grandsons of Toby II: Snowcap of Green Stables and Artesian Toby's Chief



The herd of Guy Lamb's father was also decimated by one mass theft, whose trail led through northeastern Oregon to southern Idaho. There are more horses in the far west tracing their ancestry to these Appaloosas than most breeders are aware. The advantage to the present day breeder is that these animals did not suffer the dilution to various

outcrosses including draft stock that much of the descendants of the captured herd of the Nez Perce war horses did experience.

Among horses tracing back to Knobby are Simcoe's Secoma, Sizzle Britches, Durango, Storm Cloud F., Elmer Gantry, Toby Chief Spots, Simcoe's Sarcee, Sunrise Little Beaver, Chief Smokey, and Toby 111.