



**Group Two: WW MISS KRISS 3155 (Ch-1958)** has 3 crosses to Morgan's Leopard through sire, Bear Step F-3068, by Moroccan Leopard F-1472 and out of PK Dottie T-653, a leopard daughter of Morgan's Leopard. Owned by Twin Brook Ranch, Mrs. Joan McGloin, Woodbury, Conn.

**Group Three: JAUQUIN F-801 (Banjo x Lassie)**  
chestnut spots: Colorado—1941

Both Jauquin and his leopard sire, Banjo, were raised by Mrs. Clara Wilkins of Alamosa, Colo. The dam of Jauquin was a beautiful sorrel Arab. Jauquin remained at Mrs. Wilkins' ranch his entire lifetime, during which he sired many colts, a number of them leopard. The sire of Banjo was unknown, but we will assume that he carried the leopard blood since the dam was chestnut.

Writes Mrs. Wilkins: "Jauquin was a wonderful horse, very gentle and smart. I rode him for years. He loved to ride in pickups and look around to see what might be going on, and would climb in a pickup by himself. My vet put him to sleep on account of his age and teeth. That was a sad day for me."

The blood of Jauquin is a strong color line with growing interest due to added breeding and showing of horses tracing to him.

His most familiar leopard descendant would probably be Prince Plaudit 55,156 (sor-1963) who is a grandson of Jauquin. His sire, Red Plaudit T-10,191 (sor-1960), by Jauquin, is also the sire of Plaudit's Red T-61,281 (br-1965). Prince Plaudit has sired his image in Hy Plaudit T-80,660 (ch-1967).

Well known in the northwestern part of the U.S. is Jauquin's leopard son Candy F-320. He is the sire of Chipeeta 11,235 (or-1960), who is the dam of Chipeeta Bars (ch-1967)—both 20th National winners.

Another Jauquin son, Apache Dream 3555 (ch-1958), sired Billie Chicaro T-31,889 (sor-1962) who, in

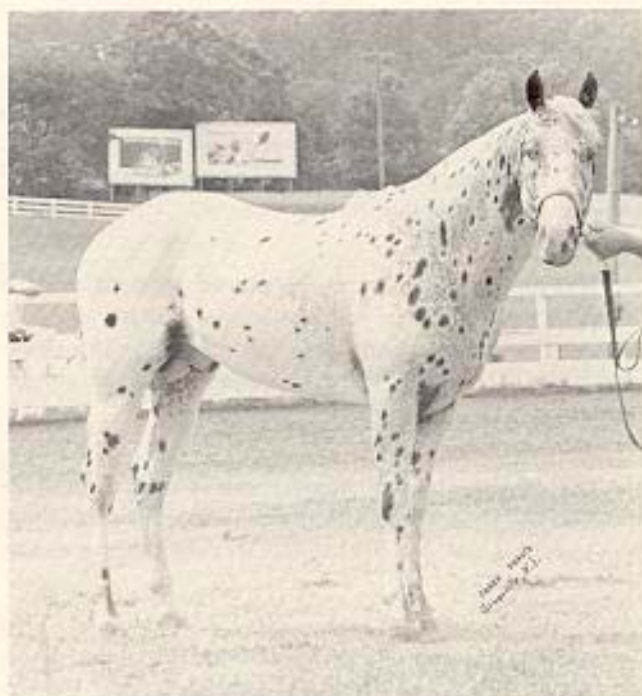


**Group Three: CANDY F-320 (1946)**, a chestnut spotted son of Jauquin. This recent picture furnished through the courtesy of the Timberline Stock Ranch, Ralph & Helen Brown, Broadview, Montana.

Caesar Chicaro T-66,151 (sor-1966). Apache Dream also turn, sired Nomandie's Chicaro 66,511 (sor-1966) and sired Valley Spotted Butt (ch-1965), out of a Q.H.

The spot distribution and growing color trait of this Jauquin line makes interesting study. As you can see in the picture below, the coloring of Valley Spotted Butt and Prince Plaudit (as well as Hy Plaudit, (back cv., Jan. '69 all strongly resemble each other. All three seem to have the similar spotting and specks concentrated over the forequarters, the appearance of a blaze, etc.

The strength and potential of the Jauquin line is evident by the individuals mentioned in this section.



**Group Three: VALLEY SPOTTED BUTT T-55,236**, a grandson of Jauquin thru Apache Dream. His coloring and markings strongly resembles that of Prince Plaudit, also a grandson of Jauquin thru Red Plaudit. Owned by Kerry L. Bonner, B-Lazy-B, Guinney, Penna.